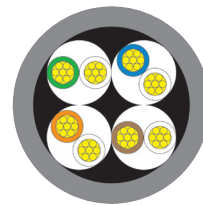
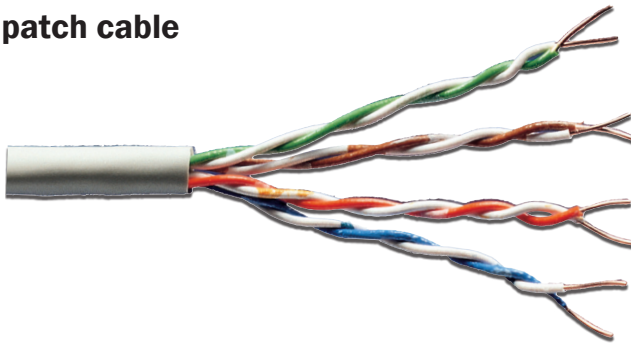


## DIGITUS® CAT 5e SF-UTP twisted pair patch cable

4x2xAWG26 SF-UTP CAT 5e 100 MHz patch cable  
 Suitable for direct assembly of RJ45 plugs for the manufacture of patch cables.  
 For installation of cable lines of class D, 100 MHz.  
 Conforming to ISO/IEC 11801, DIN EN 50173, DIN EN 50288-2-2



Physical Description	
Basic Conductor	stranded AWG 26/7
Insulation	PE
Total number of insulated conductors	8, twisted in 4 pairs
Color code	blue-white, orange-white, green-white, brown-white
Individual pair shield	none
Overall shield	aluminium foil and tin-coated copper wire braid
Outer jacket	PVC
Color	grey

Electrical Properties	
DC loop resistance	≤ 280Ω/ km
Resistance unbalance	≤ 2%
Insulation resistance (500 V)	≥ 2000MΩ *km
Capacitance at 800 Hz	nom. 48 nF/km
Capacitance unbalance (pair to ground)	≤ 1500 pF/km
Characteristic impedance (1-100 MHz)	(100 ± 15) Ω
Nominal velocity of propagation	approx. 67 %
Propagation delay	Nominal ≤ 535 ns/100m
Delay skew	Nominal ≤ 45 ns/100m
Test voltage (DC, 1 min) Core/Core	1000 V
Coupling attenuation	≥ 40 dB

Transmission Properties								
FREQ. MHz	Absorbability dB/100m	NEXT dB	PS NEXT dB	ACR dB/100m	PS ACR dB/100m	ACR-F dB/100m	PS ACR-F dB/100m	Return loss dB
	Typ	Typ	Typ	Typ	Typ	Typ	Typ	Typ
1	3	60,0	57,0	57,0	54,0	57,4	54,4	17,0
4	4,5	53,5	50,5	49,1	46,1	45,4	42,4	17,0
8	6,3	48,6	45,6	42,3	39,3	39,3	36,3	17,0
40	7,1	47,0	44,0	39,9	36,9	37,4	34,4	17,0
16	9,1	43,6	40,6	34,5	31,5	33,3	30,3	17,0
20	10,2	42,0	39,0	31,8	28,8	31,4	28,4	17,0
25	11,4	40,3	37,3	28,9	25,9	29,4	26,4	16,0
31,25	12,9	38,7	35,7	25,9	22,9	27,5	24,5	15,1
62,5	18,6	33,6	30,6	15,0	12,0	21,5	18,5	12,1
100	24	30,1	27,1	6,1	3,1	17,4	14,4	10,0

**202233 / DK-1511-P-1**  
 100m ring, CAT 5e U-UTP Twisted Pair Patch Cable

**202257 / DK-1511-P-305**  
 305m ring, CAT 5e SF-UTP Twisted Pair Patch Cable